

AiResea Partners

AI Business Plan 2025



Jeffrey L Ward

 2084577171

 contact@airesea.com

 www.airesea.com



Information, data and drawings in this business plan are strictly confidential and are supplied on the understanding that they will be held confidentially and not disclosed to third parties without the prior written consent of Airesea Partners



FOUNDED
2025

LEGAL FORMATION
S-Corp

INDUSTRY
Information Services

CONFIDENTIALITY

Information, data and drawings in this business plan are strictly confidential and are supplied on the understanding that they will be held confidentially and not disclosed to third parties without the prior written consent of Alresea Partners

DISCLAIMER

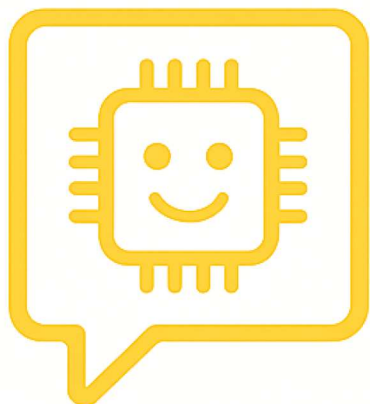
This document may contain certain forward-looking statements within the meaning of Section 27A of the Securities Act of 1933, as amended, and Section 21E of the Securities Exchange Act of 1934, as amended, including, but not limited to, statements as to future operating results and plans that involve risks and uncertainties. We use words such as "expects", "anticipates", "believes", "estimates", the negative of these terms and similar expressions to identify forward looking statements. Such forward-looking statements involve known and unknown risks, uncertainties and other factors which may cause the actual results, performance or achievements of the Company to differ materially from any future results, performance or achievements expressed or implied by those projected in the forward-looking statements for any reason. References herein to "the Company," "we," "our," "us" and similar words or phrases are references to Alresea Partners, and/or its subsidiaries, unless the context otherwise requires.

OWNERSHIP

Name	Ownership	Shares
The Research Company	100%	1000

LOCATIONS

Title	Address
Headquarters	212 W Ironwood Dr, Ste. D #2900 Coeur d Alene, Idaho 83814-1403



AiResea Partners

A Division of The Research Company

THE PITCH

AiResea Partners (AIR-uh-sea-uh) is an AI consulting and integration firm specializing in helping mid-sized, non-tech businesses harness the power of artificial intelligence without the need for internal technical teams. A division of The Research Company, AiResea Partners was founded to bridge the gap between AI potential and real-world business application. With a consultative, human-first approach, we enable executives to reduce costs, automate workflows, and improve decision-making using AI tools.

Our goal is to become the leading AI integration partner for non-tech businesses in the United States. AiResea delivers customized playbooks and managed support for process automation, strategic forecasting, and operational AI integration.

AI-ENABLED BUSINESS PLANNING STATEMENT

AiResea Partners (AIR-uh-sea-uh) proudly stands as the **first American business conceived, planned, and founded by Artificial Intelligence.**

On **April 7, 2025**, Co-founder **Jeffrey L. Ward** initiated this groundbreaking journey by prompting ChatGPT with the query:

"Create a start-up business idea proposal for Jeffrey L Ward that would utilize his skills, talent, and experience as described in his resume."

The resulting collaboration led to an AI-created business proposal, which evolved into a complete business plan, AI-guided company name, logo, branding system, operational structure, and growth strategy—all uniquely crafted with the strategic use of artificial intelligence.

This business plan was developed with extensive and deliberate integration of AI tools, reflecting AiResea Partners' own mission to harness artificial intelligence for smarter, faster, and more effective decision-making. From market research and financial modeling to branding, forecasting, marketing strategy, and operational planning, advanced AI systems were utilized at every stage of development.

This approach exemplifies our belief in the **transformative power of AI**—not only as a service we deliver to our clients but as a driving force within our own foundation.

Our plan is both a **roadmap for scalable growth** and a **real-world demonstration** of how AI can drive clarity, creativity, strategic precision, and organizational innovation.

AiResea Partners is passionately committed to using artificial intelligence not merely as a tool for others—but as a core element of our identity, our success, and our future.

THE TEAM



Jeffrey L Ward

Founder/
Managing
Partner (CEO)

KEY HIGHLIGHTS

- Jeffrey L. Ward is the visionary behind Alresea Partners, bringing decades of experience in executive leadership, client success, and strategic business transformation. Jeffrey has spent much of his career helping mid-sized organizations modernize operations, improve profitability, and scale strategically. His background in education, finance, and business development gives him a unique understanding of the operational and analytical challenges facing non-tech businesses today.
- Currency - To ensure Alresea Partners stays ahead of the curve in artificial intelligence strategy, Jeffrey is completing the 'Artificial Intelligence for Business' program at Harvard Business School, equipping him with cutting-edge knowledge on leveraging AI for competitive advantage.
- Strategic Vision – Aligns AI capabilities with business models and operational goals• Business-first Approach – Focuses on practical, ROI-driven applications of AI.
- Executive Communication – Bridges the gap between technical complexity and executive decision-making.
- Proven Leadership – Experience in building, scaling, and advising businesses in highly regulated and traditional sectors.
- AI Integration – Harvard-certified in artificial intelligence business strategy, with a focus on ethical and impactful implementation.



Artificial Intelligence (AKA Bug)

Co-Founder &
Virtual Partner

KEY HIGHLIGHTS

- Artificial Intelligence, acting as a virtual partner and co-founder, played a transformative role in the creation of Alresea Partners. From initial concept development to detailed business planning, branding, financial modeling, service design, and operational forecasting, AI served as an essential architect and guide throughout the company's formation. The collaboration between Jeffrey L. Ward and AI exemplifies a pioneering model of business creation, where human strategic insight and AI's expansive processing and generation capabilities combined to build a real-world, operational company.
- Concept Development – Generated the original business proposal and strategy prompts
- Branding and Identity – Created the company name, logo concepts, slogans, and initial design framework
- Strategic Structuring – Designed service offerings, target market positioning, and operational models
- Communication – Drafted media releases, website copy, and investor materials